

No-Spy

MD40•60, MD60•60, MD70•60
Technical Manual

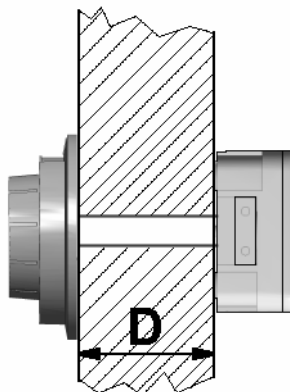


CHARACTERISTICS

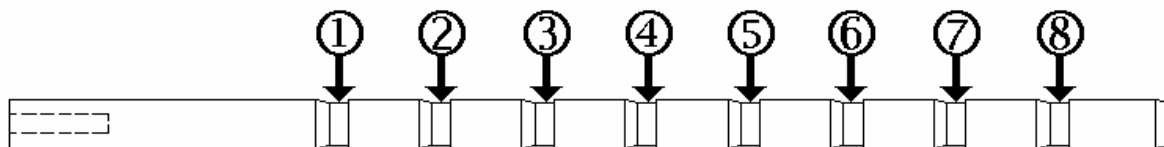
This mechanical dial is delivered with a 6 mm square shaft and can be used only with lock ML67•40. The numbers on the No-Spy dial can only be read up close by the operator. The code numbers cannot be “spied on” from a distance. The dial is available in black (MD60•60) and mat chrome plated (MD70•60). The provided shaft can be used for door diameters up to 125 mm / 5 inch.

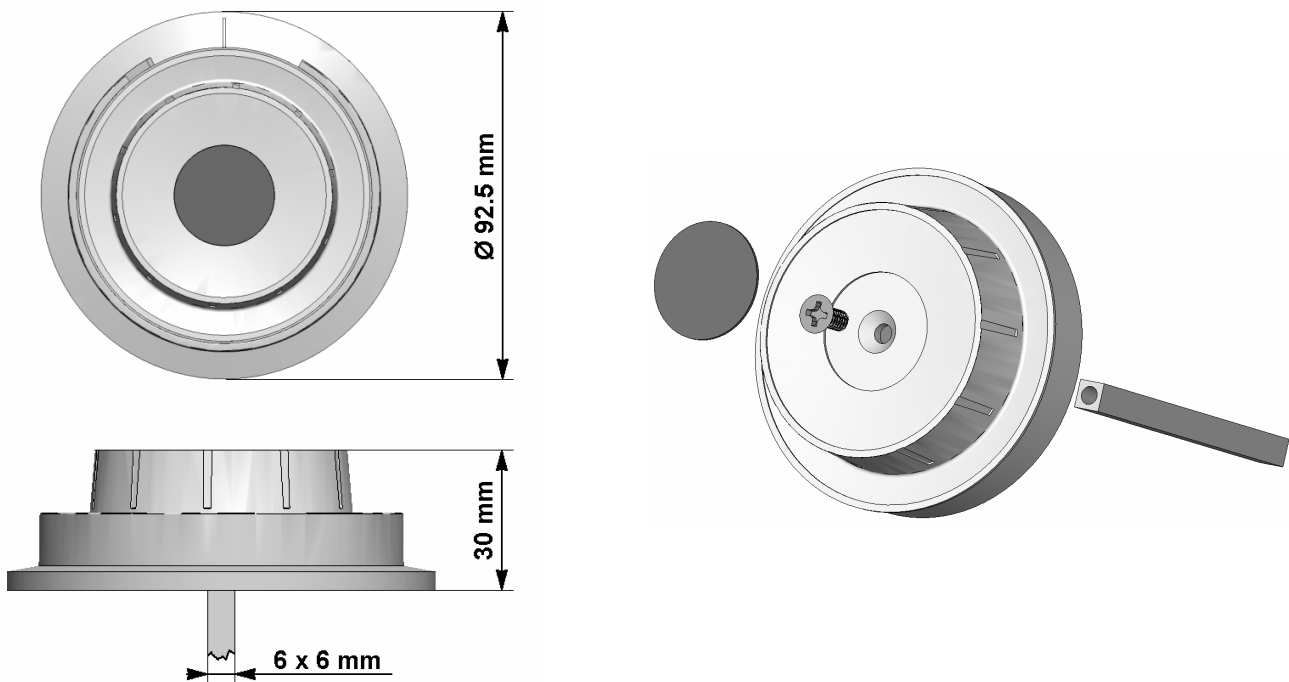
DIMENSIONS / MOUNTING INSTRUCTION

Measure the distance (**D**) between the mounting surfaces of the dial and the lock (see picture below). Cut the shaft in one of the eight provided grooves. Use the table below to determine in which groove to cut. Do not leave more segments on the shaft than necessary. Normally no deburring is required.



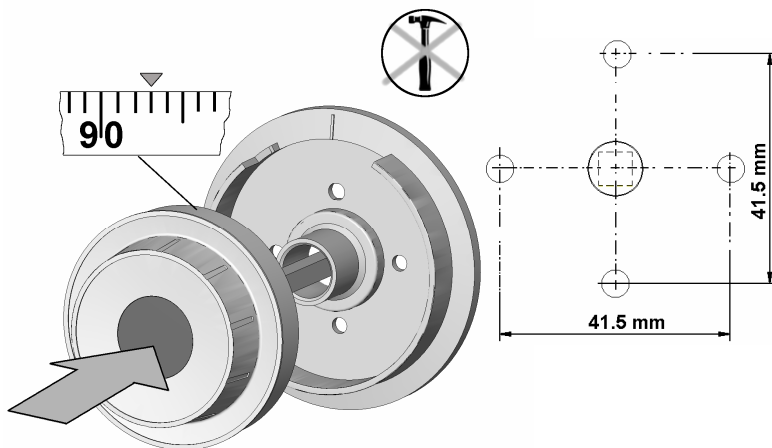
Distance (D) less than		Cut Groove #
23 mm	0.9 inch	1
36 mm	1.4 inch	2
48 mm	1.9 inch	3
61 mm	2.4 inch	4
74 mm	2.9 inch	5
87 mm	3.4 inch	6
100 mm	3.9 inch	7
112 mm	4.4 inch	8





Affix the shaft in the square hole with the provided screw in the dial. Make sure the shaft is seated all the way in the square hole and does not rest in the hexagonal cavity above. Cover the screw with the larger label. The small label is not used in this assembly.

Install the lock first according to the installation instruction.



The diameter of the spindle hole should be maximum 12 mm. Mount the dial plate with two M4 or 8-32“screws (not included) so that the opening index is at 12:00 position.

With the lock in OPEN position (bolt retracted) hold the dial in a way that approximately “93” is lined up with the opening index and push it with some pressure into the lock.

The shaft cannot be pulled out.