

EuroLine

EC10•40 Technical Manual

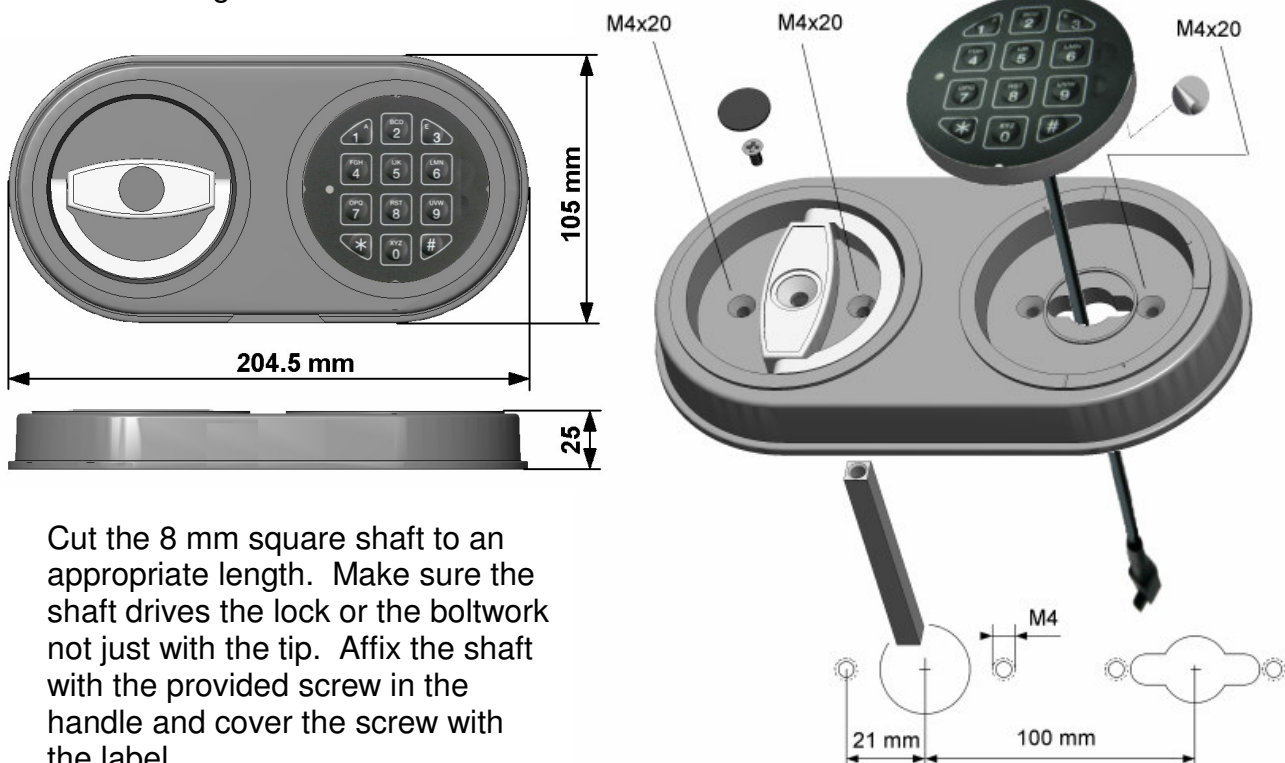


CHARACTERISTICS

The EuroLine series was specially developed for safes which have two thru holes, 100 mm apart. The plastic housing of the EuroLine Entry unit combines an alpha-numeric membrane keypad with a pull handle (metal). The 8x8 mm square shaft of the pull handle drives either the lock or a boltwork. This unit requires a separate battery box. Battery terminals in the front of the keypad are provided in case batteries are completely depleted. Cable length is approximately 30 cm.

DIMENSIONS / MOUNTING INSTRUCTION

The diameter of the cable hole should be minimum 9 mm, maximum 12 mm. The spindle hole should be maximum \varnothing 13 mm. Both holes must be deburred well to avoid damage.



Cut the 8 mm square shaft to an appropriate length. Make sure the shaft drives the lock or the boltwork not just with the tip. Affix the shaft with the provided screw in the handle and cover the screw with the label.

Adjust position and mount the entry unit with M4 flathead screws. Push the shaft as shown above into the boltwork. **Lock and boltwork must be in the "OPEN" position.**



Battery box ST50-65

Keep the inside of the housing clean (remove dust). Route the cable through the cable hole. Route the battery cable in the opposite direction through the cable hole and push the white connector into the receptacle on the circuit board. Make sure the connector is completely seated.

Remove the protective layer from the adhesive ring on the back of the keypad unit. Position the keypad and press it into the housing. **Make sure the surfaces are dry and clean, and no cables are in the way. Do not remove and re-apply keypad once it has been glued in the housing!**

Connect one (1) battery to the battery box. Only use 9V-ALKALINE batteries from brand name manufacturers like DURACELL.

Dimensions of the battery box P/N ST50-65:

